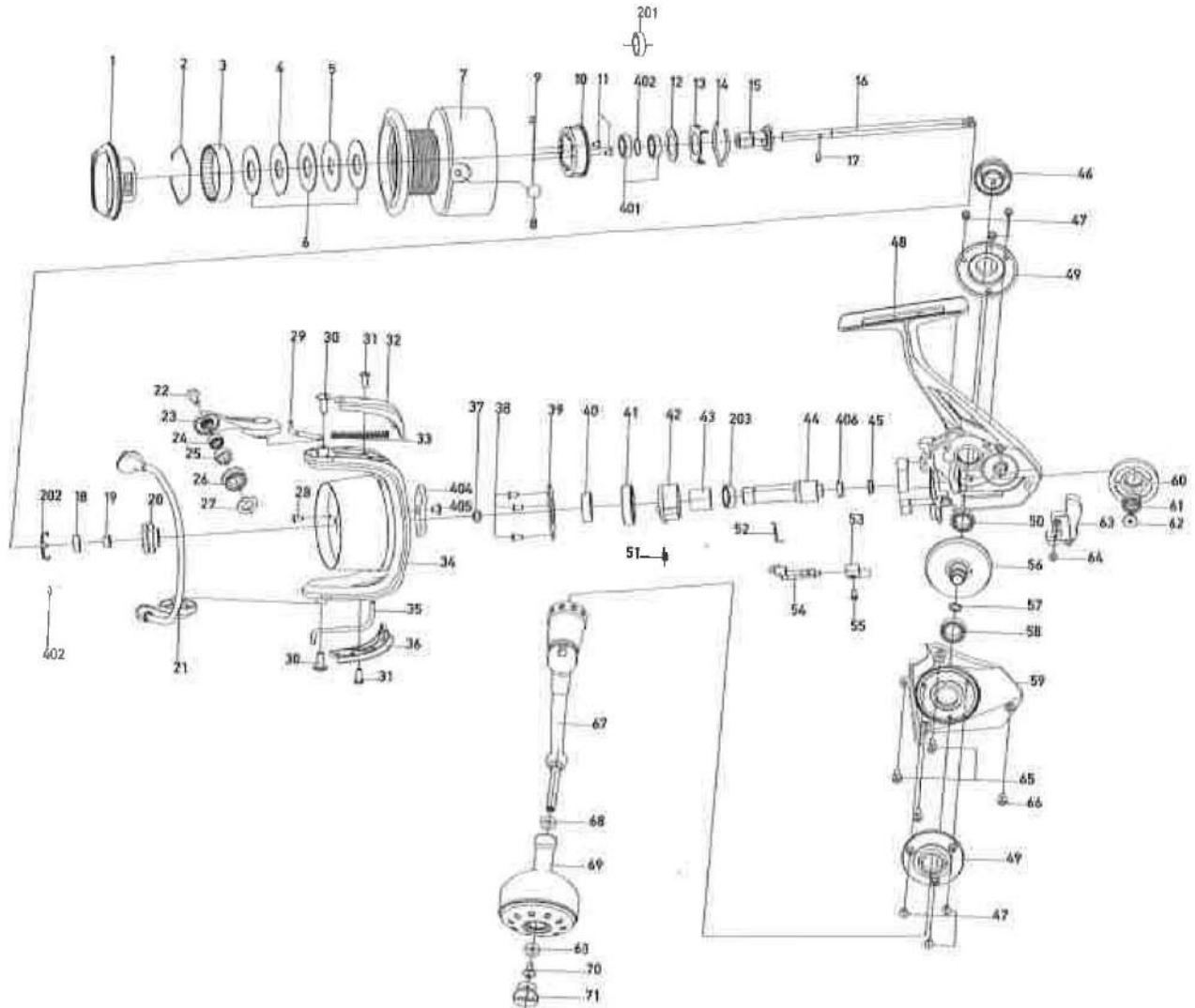




BLAST GOLD SW

Saltwater Series

Model : 2000 / 3000 / 4000 / 5000 / 3000H / 4000H / 5000H



4000H
 Reel wt 335g Max Drag 18kg Gear Ratio :6.2:1
 Line Capacity (mm-m/lbs-yds) 0.26-290 , 0.29-260 / 12-290,16-230

| No. | Part Name | No. | Part Name | No. | Part Name | No. | Part Name | No. | Part Name |
|-----|-----------------------|-----|---------------------|-----|-----------------------|-----|---------------------------|-----|-----------------------|
| 1 | Drag Knob Assy | 18 | Ball Bearing | 35 | Kick Level | 52 | Anti-Reverse Level Spring | 69 | Handle Knob |
| 2 | Drag Washer Retainer | 19 | Bushing | 36 | Rotor Cover-B | 53 | Anti-Reverse Level | 70 | Screw |
| 3 | Drag Knob Click Plate | 20 | Rotor Nut | 37 | Adjusting Washer-B | 54 | Anti-Reverse Shaft | 71 | Handle Knob Cap |
| 4 | Eared Washer | 21 | Ball Assy | 38 | Screw | 55 | Screw | | |
| 5 | Key Washer | 22 | Screw | 39 | Roller Cover | 56 | Drive Gear Assy | | 2000 / 3000 Model |
| 6 | Drag Washer | 23 | Bail Arm | 40 | Ball Bearing | 57 | Washer | 201 | Ball Bearing |
| 7 | Spool | 24 | Ball Bearing | 41 | Roller Room | 58 | Ball Bearing | 202 | Ball Bearing Cover |
| 8 | Line Clip | 25 | Line Roller Bushing | 42 | Roller | 59 | Body Cover | 203 | Ball Bearing |
| 9 | Line Clip Spring | 26 | Line Roller | 43 | Roller Inner Bushing | 60 | Oscillation Gear | | |
| 10 | Screw | 27 | Line Roller Washer | 44 | Pinion Gear | 61 | Ball Bearing | | 4000 / 5000 Model |
| 11 | Ball Bearing Retainer | 28 | Screw | 45 | Pinion Gear Bushing-B | 62 | Screw | 401 | Ball Bearing |
| 12 | Adjusting Washer-A | 29 | Bail Spring Shaft | 46 | Handle Cap | 63 | Slider Assy | 402 | Washer |
| 13 | Click Plate | 30 | Screw | 47 | Screw | 64 | Screw | 403 | Ball Bearing Retainer |
| 14 | Click Leaf Spring | 31 | Screw | 48 | Body | 65 | Ball Bearing | 404 | Balance Plate |
| 15 | Shaft Drag Adapter | 32 | Rotor Cover-A | 49 | Decorating Ring | 66 | Screw | 405 | Screw |
| 16 | Main Shaft | 33 | Bail Spring | 50 | Ball Bearing | 67 | Handle Assy | 406 | Pinion Gear Bushing-A |
| 17 | Pin | 34 | Rotor | 51 | Spring | 68 | Bushing | | |